

BASIS OF BEARINGS:

BEARINGS SHOWN HEREON ARE GRID NORTH (CALIFORNIA COORDINATE SYSTEM OF 1983, ZONE 2, EPOCH 2010.00) AND ARE BASED ON STATIC POST-PROCESSED GLOBAL POSITIONING SYSTEM TIES FROM "CONTROL POINT #1" (SEE SHEET 4) TO CONTINUOUSLY OPERATING REFERENCE STATIONS (CORS): CASR (PID D07031), P188 (PID DM6171), AND HOPB (PID AF9699). DISTANCES SHOWN HEREON ARE GROUND, TO OBTAIN GRID DISTANCES MULTIPLY BY THE COMBINED FACTOR = 0.99978610 SEE SHEET 4 FOR CONTROL DIAGRAM.

RECORD OF SURVEY

OF
A PORTION OF SECTIONS 2 & 3, TOWNSHIP 11 NORTH,
RANGE 8 WEST, MOUNT DIABLO MERIDIAN, AND SECTION 35,
TOWNSHIP 12 NORTH, RANGE 8 WEST, MOUNT DIABLO MERIDIAN

THE STATE OF CALIFORNIA,
DEPARTMENT OF FORESTRY AND FIRE PROTECTION,

COUNTY OF LAKE, STATE OF CALIFORNIA.

JANUARY 2016 SCALE: 1"=400'

SHEET 1 OF 6

SURVEYOR'S STATEMENT

THIS MAP CORRECTLY REPRESENTS A SURVEY MADE BY ME OR UNDER MY DIRECTION IN CONFORMANCE WITH THE REQUIREMENTS OF THE PROFESSIONAL LAND SURVEYORS' ACT AT THE REQUEST OF THE STATE OF CALIFORNIA, DEPARTMENT OF FORESTRY AND FIRE PROTECTION, IN NOVEMBER & DECEMBER, 2015.

David B. Karoly 06/02/2016
DAVID B. KAROLY
LS 7849



COUNTY SURVEYOR'S STATEMENT

THIS MAP HAS BEEN EXAMINED IN ACCORDANCE WITH SECTION 8766 OF THE PROFESSIONAL LAND SURVEYORS' ACT, THIS 8TH DAY OF JUNE 2016.

Gordon M. Haggitt
GORDON M. HAGGITT, PLS 6352
COUNTY SURVEYOR, LAKE COUNTY, CALIFORNIA



COUNTY RECORDER'S STATEMENT

FILED THIS 9TH DAY OF JUNE 2016, AT 11:28 AM, IN BOOK 94 OF RECORD OF SURVEYS AT PAGES 34-39, AT THE REQUEST OF THE DEPARTMENT OF FORESTRY AND FIRE PROTECTION.

RICHARD A. FORD
COUNTY ASSESSOR-RECORDER

BY: *Kristina Jefferies* FILE NO. 2016 007116
DEPUTY COUNTY RECORDER

NO FEE

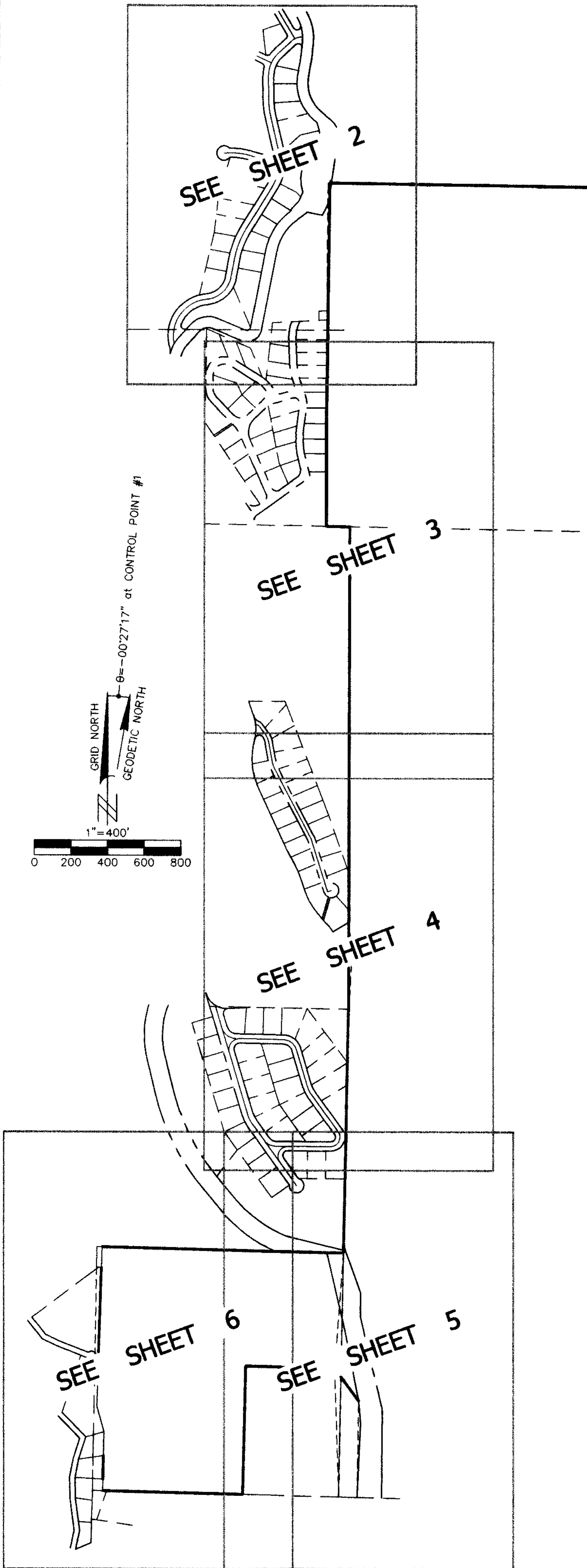
LEGEND:

- BOUNDARY PER THIS SURVEY
- ⊙ SET 2"x27" LONG ALUMINUM MONUMENT WITH 3-1/4" Ø CDF CAP STAMPED LS7849, 2015.
- FOUND 4"x4" CONCRETE MONUMENT WITH CDF BRASS CAP AS NOTED.
- FOUND T.L. O'CONNOR BRASS CAP IN CONCRETE OR CDF BRASS CAP ON IRON PIPE AS NOTED.
- FOUND REBAR OR T-BAR WITH BATHEY CAP AS NOTED.
- ✱ FOUND MONUMENT AS NOTED HEREON.
- ▲ CONTROL MONUMENT AS NOTED.
- (1) = RECORD DATA PER 1 R/S 48 (T.L. O'CONNOR 1950)
- (2) = RECORD DATA PER 2 R/S 63 (K. NELSON 1965)
- (3) = RECORD DATA PER 7 T.M. 7-8 (T.L. O'CONNOR 1958)
- (4) = RECORD DATA PER 2 R/S 50 (T.L. O'CONNOR 1964)
- (5) = RECORD DATA PER 7 T.M. 16-17 (T.L. O'CONNOR 1959)
- (6) = RECORD DATA PER 7 T.M. 109-110 (T.L. O'CONNOR 1964)
- (7) = RECORD DATA PER 13 R/S 11-16 (J.C. CONKRIGHT 1974)
- (7a) = RECORD DATA PER AN UNRECORDED SURVEY DATED JUNE, 1978 BY JAMES C. CONKRIGHT, LS3137, IN WHICH HE SET LINE MONUMENTS ON THE NORTH LINE OF THE SE 1/4 OF THE SE 1/4 OF SECTION 3. HIS MAP AND FIELD NOTES ARE ON FILE WITH THIS OFFICE. SEE FILE 88-80 IN THE COUNTY SURVEYOR'S OFFICE.
- (8) = RECORD DATA PER 1163 O.R. 179 (STATE TO MIDDLETOWN UNIFIED SCHOOL DISTRICT 1982)

N.T.S.=NOT TO SCALE
SUB=BURIED

NOTES:

1. THE PURPOSE OF THIS SURVEY IS TO DETERMINE THE GENERAL WESTERLY BOUNDARY OF BOGGS MOUNTAIN DEMONSTRATION STATE FOREST, AND COMPLY WITH THE PROFESSIONAL LAND SURVEYOR'S ACT SECTIONS 8762(b)(1), (2), & (3).
2. KNUTE NELSON ACCEPTED MOST OF THE 1/64th LINE IN SECTION 35 WHICH WAS LOCATED BY T.L. O'CONNOR IN 1950 (1 R/S 48) AND PERPETUATED BY T.L. O'CONNOR IN 1958 (7 T.M. 7-8). HE APPARENTLY REJECTED T.L. O'CONNOR'S LOCATED 1/64th LINE NORTH OF THE NORTHEAST CORNER OF 7 T.M. 7-8 WITHOUT GIVING A REASON. HIS COMPUTATIONS ARE IN ERROR RESULTING IN SETTING MONUMENTS 14 & 20 FUTHER WEST THAN 2 R/S 63 INDICATES. NELSON'S ALTERNATE 1/64th LINE NORTH OF 7 T.M. 7-8 IS REJECTED IN FAVOR OF T.L. O'CONNOR'S ORIGINAL 1/64th LINE.
3. BEARING AND DISTANCE DATA RUN BETWEEN MAJOR CORNERS, INTERMEDIATE LOT CORNERS LOCATIONS ARE INDICATED BY OFFSETS FOR CONVENIENCE. ALL OFFSETS ARE PERPENDICULAR TO LINE AND ARE FROM LINE TO THE MONUMENT. MONUMENTS SET BY THE VARIOUS SURVEYS ON-LINE ARE ACCEPTED AS MARKING THE BOUNDARIES AS SHOWN, UNLESS STATED OTHERWISE.
4. THE WEST BOUNDARY OF THE SOUTHEAST QUARTER OF THE SOUTHEAST QUARTER OF SECTION 3, T11N, R8W, M.D.M. HAS MULTIPLE LOCATIONS AS SHOWN ON 13 R/S 11-16. THE STATE HAS EXECUTED BOUNDARY LINE AGREEMENTS WITH TWO PROPERTY OWNERS WEST OF THE FOREST, THOSE BOUNDARIES ARE SHOWN AS A HEAVY LINE. THE LIGHT DASHED LINES SHOWN ARE UNRESOLVED AT THE TIME OF THIS SURVEY. SEE SHEET 6.



RECORD OF SURVEY

OF
A PORTION OF SECTIONS 2 & 3, TOWNSHIP 11 NORTH,
RANGE 8 WEST, MOUNT DIABLO MERIDIAN, AND SECTION 35,
TOWNSHIP 12 NORTH, RANGE 8 WEST, MOUNT DIABLO MERIDIAN

THE STATE OF CALIFORNIA,
DEPARTMENT OF FORESTRY AND FIRE PROTECTION,
COUNTY OF LAKE, STATE OF CALIFORNIA.

JANUARY 2016 SCALE: 1"=100'

SHEET 2 OF 6

TIES FROM C W NW 1/64th CORNER OF SEC. 35:

A	S44°00'10"W	501.81'	FND. 3/4" REBAR W/BATHEY CAP, LS2581, SUB 0.2'.
B	S51°58'04"W	365.33'	FND. 5/8" REBAR W/BATHEY CAP, LS2581, MARKED FOR COR 9/10, FLUSH.
C	S54°19'55"W	272.57'	FND. 3/4" REBAR W/BATHEY CAP, LS2581, UP 0.2'.
D	S54°22'04"W	259.64'	FND. 5/8" REBAR W/BATHEY CAP, LS2581, MARKED FOR COR 8/9, SUB 1.0'.
E	S55°37'16"W	261.91'	FND. 7/8" OPEN IRON PIPE, UP 0.7'.
F	S64°41'50"W	177.21'	FND. 7/8" OPEN IRON PIPE, UP 0.5'; LEANS W'LY.
G	S66°11'02"W	157.00'	FND. 3/4" REBAR W/BATHEY CAP, ILLEGIBLE, SUB 1.60'.
H	S77°00'38"W	156.41'	FND. 3/4" REBAR W/BATHEY CAP, LS2581, SUB 0.50'.
I	N12°52'51"W	216.71'	FND. 3/4" REBAR W/BATHEY CAP, LS2581, UP 0.40'.
J	N11°24'55"W	290.68'	FND. 7/8" OPEN IRON PIPE, UP 0.8'.
K	N15°03'33"W	358.52'	FND. 3/4" REBAR W/BATHEY CAP, LS2581, SUB 0.20'.
L	N18°07'47"W	396.70'	FND. 5/8" REBAR W/BATHEY CAP, LS2581, MARKED FOR COR 4/5, UP 0.2'.
M	S05°12'38"W	115.14'	FND. T-BAR WITH CALIF. DIVISION OF HIGHWAYS BATHEY CAP.

See Sheet 1 for Legend,
Basis of Bearings, & Notes

33 P.M. 27-28

BOGGS MOUNTAIN DEMONSTRATION STATE FOREST

PORTION OF SECTION 35,
T.12N., R.8W., M.D.M.

207 O.R. 418

MONUMENT NOTES:

OFFSETS GIVEN ARE PERPENDICULAR TO LINE AND ARE FOR LOCATION ONLY. MONUMENTS ARE ACCEPTED IN PLACE AS MARKING THE BOUNDARY UNLESS OTHERWISE STATED.

- (14) SEE NOTE ON MAP.
- (15) FOUND 4"x4" CONCRETE MONUMENT, UP 2.0', W/C.D.F. BRASS CAP STAMPED FOR THE CORNER & LS2822, 1965, PER (J2)
- (20) SEE NOTE ON MAP.
- (A) FND. T-BAR W/BATHEY CAP, LS2581, MARKED FOR LOTS 1/2. PER (J3). E0.04'
- (B) FND. T-BAR W/BATHEY CAP, LS2581, MARKED FOR LOTS 2/3. PER (J3). W0.01'
- (C) FND. T-BAR, CAP MISSING, UP 0.35'. PER (J3). E0.26'
- (D) FND. T-BAR W/BATHEY CAP, LS2581, MARKED FOR LOTS 4/5. PER (J3). W0.02'
- (E) FND. CONCRETE MONUMENT W/2-1/2" BRASS CAP, T.L. O'CONNOR, LS2581, FOR SE COR. LOT 7, PER (J3) IN LIEU OF IRON PIPE PER (I1).

FND. 3/4" REBAR WITH 2-1/2" ALUMINUM CDF CAP STAMPED LS7733 PER C.R. 12-8-93. SET IN THE REMAINS OF KNUTE NELSON'S CONCRETE MONUMENT. HELD FOR LINE TO EAST.

FND. 1" O.D. OPEN IRON PIPE, NO TAG, TAKEN AS THE IRON PIPE SET BY T.L. O'CONNOR, LS2581, PER 1 R/S 48 (1950). FLUSH, BENT. KNUTE NELSON, LS2822, NOTED FINDING THIS PIPE IN HIS FIELD NOTES BUT DID NOT SHOW IT ON 2 R/S 63. HELD FOR LINE TO SOUTH.

T.L. O'CONNOR ORIGINALLY ESTABLISHED THE 1/16th LINE WEST FROM THE FOUND IRON PIPE PER 1 R/S 48 BUT HE CORRECTED THE NORTHING OF THE LINE ON 2 R/S 50 AND KNUTE NELSON FIRST PHYSICALLY ESTABLISHED THE LINE ON 2 R/S 63.

EAST R/W LINE OF ROUTE 175 PER THE DESCRIPTION IN 622 O.R. 600. THIS DEED WAS FROM THE WEST ADJOINER OF THE STATE FOREST AND DID NOT CONVEY TITLE INSIDE THE FOREST. THE LINE IS SHOWN FOR ILLUSTRATION ONLY.

1/64th LINE PER THIS SURVEY. THIS LINE WAS ESTABLISHED BY T.L. O'CONNOR PER 1 R/S 48 (1950).

1/64th LINE PER KNUTE NELSON'S 2 R/S 63 (1965). T.L. O'CONNOR HAD ALREADY ESTABLISHED THE 1/64th LINE PER 1 R/S 48 (1950) AND 7 T.M. 7&8 (1958). THIS SURVEY ACCEPTS THE ORIGINAL 1/64th LINE BY O'CONNOR (AS NELSON ALSO DID FOR MOST OF THE LINE).

FND. 2-1/2" CAP IN CONCRETE MONUMENT, "T.L. O'CONNOR, LLS2581" MARKED FOR THE N.E. CORNER LOT 1, FLUSH, PER 7 T.M. 7, 8.

N 87°05'36" E 4.50'
(S 86°41' W 4.44')2

DETAIL
SCALE: 1"=20'

at CONTROL POINT #1

GRID NORTH
GEODETIC NORTH

1"=100'
0 50 100 150 200

ADAMS SPRINGS SUBDIVISION NO. 2
8 T.M. 54-55-56

DRIVE

SNEAD

STATE ROUTE 175

MOONEY
DOC.#2004005493

PINE VIEW HEIGHTS
SUB. NO. 1
7 T.M. 7-8

SEE SHEET 3

D to E:
246.89'
(246.84')3

RECORD OF SURVEY

OF
A PORTION OF SECTIONS 2 & 3, TOWNSHIP 11 NORTH,
RANGE 8 WEST, MOUNT DIABLO MERIDIAN, AND SECTION 35,
TOWNSHIP 12 NORTH, RANGE 8 WEST, MOUNT DIABLO MERIDIAN

THE STATE OF CALIFORNIA,
DEPARTMENT OF FORESTRY AND FIRE PROTECTION,

COUNTY OF LAKE, STATE OF CALIFORNIA.

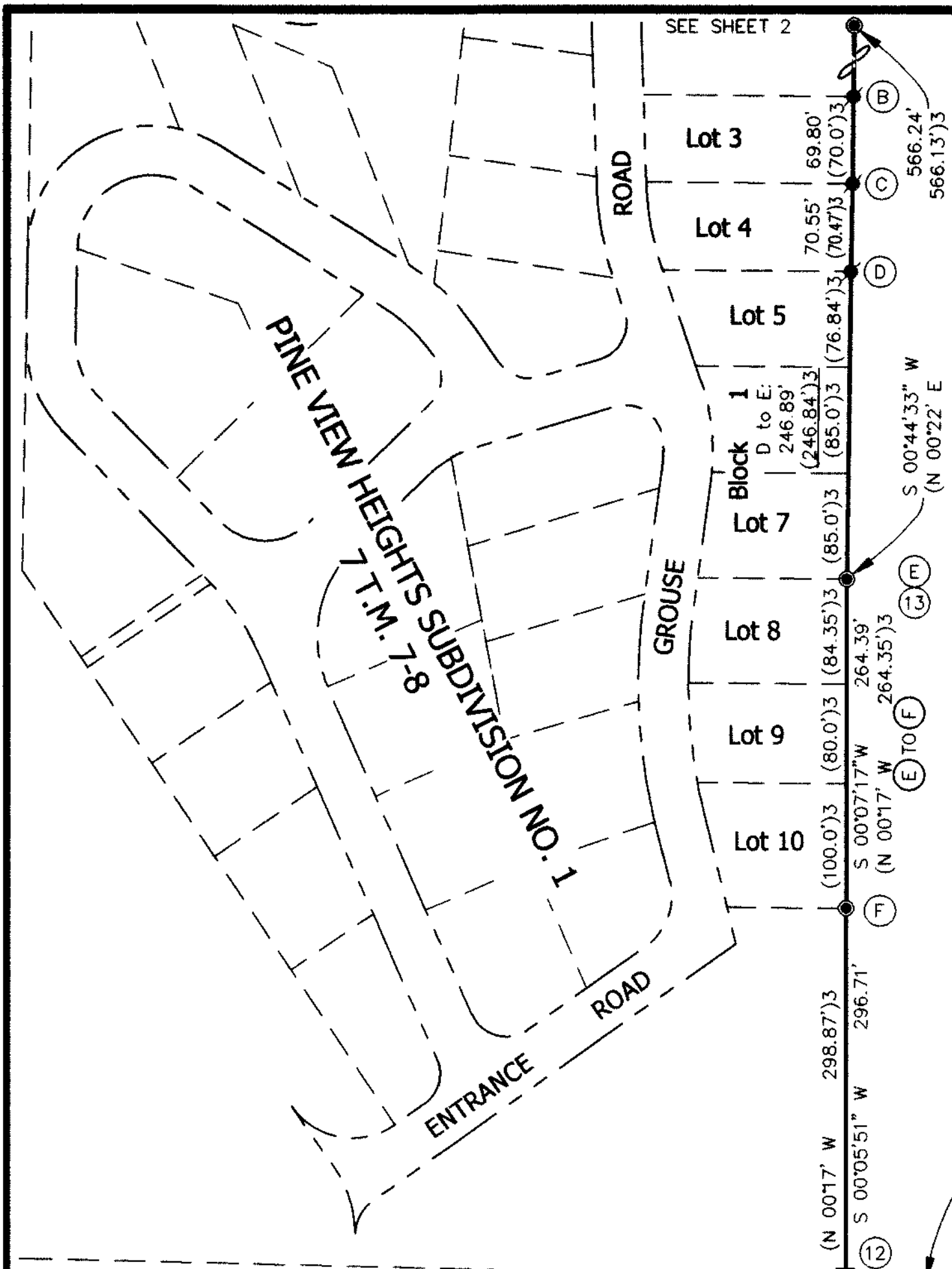
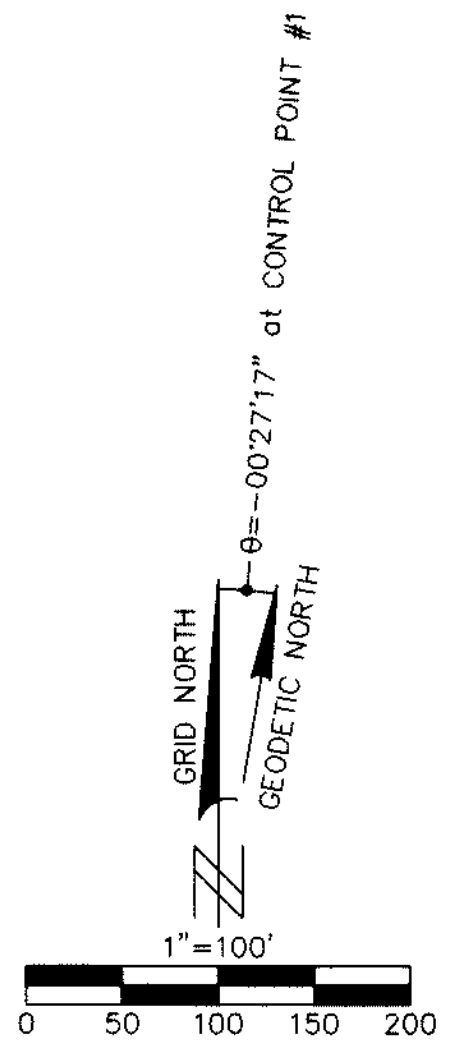
JANUARY 2016 SCALE: 1"=100'

SHEET 3 OF 6

**BOGGS MOUNTAIN DEMONSTRATION
STATE FOREST**

PORTION OF SECTION 35,
T.12N., R.8W., M.D.M.

207 O.R. 418



S 00°08'20" W 2.17' N.T.S.
(S 00°07'53" W 2.17')2

S 88°44'43" E 129.37'
(S 88°43'42" E 129.20')2

BASIS OF BEARINGS:

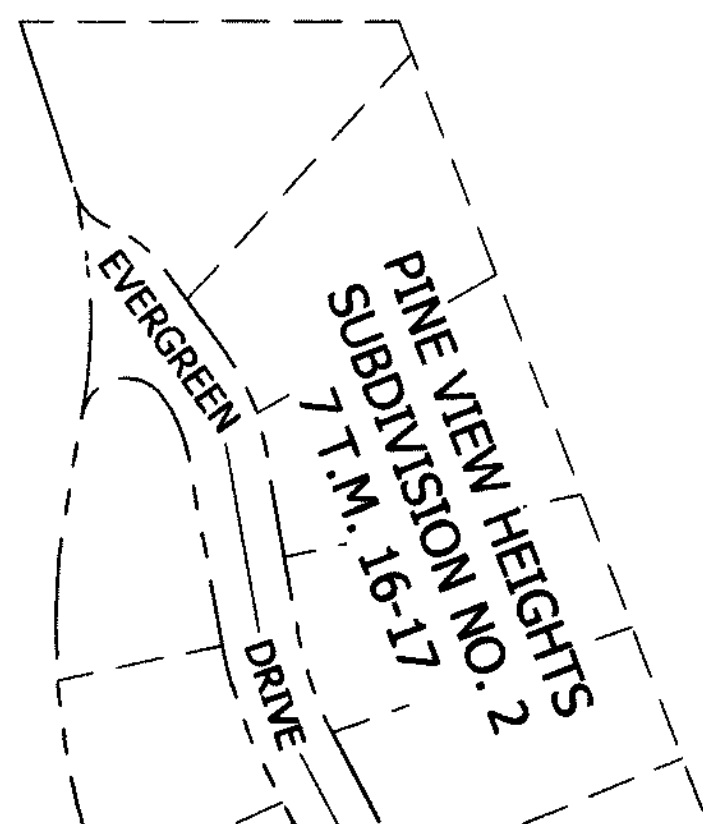
BEARINGS SHOWN HEREON ARE GRID NORTH (CALIFORNIA COORDINATE SYSTEM OF 1983, ZONE 2, EPOCH 2010.00) AND ARE BASED ON STATIC POST-PROCESSED GLOBAL POSITIONING SYSTEM TIES FROM "CONTROL POINT #1" (SEE SHEET 4) TO CONTINUOUSLY OPERATING REFERENCE STATIONS (CORS): CASR (PID D07031), P188 (PID DM6171), AND HOPB (PID AF9699). DISTANCES SHOWN HEREON ARE GROUND, TO OBTAIN GRID DISTANCES MULTIPLY BY THE COMBINED FACTOR = 0.99978610 SEE SHEET 4 FOR CONTROL DIAGRAM.

SEE SHEET 1 FOR NOTES

LEGEND:

- BOUNDARY PER THIS SURVEY
- ⊙ SET 2"x27" LONG ALUMINUM MONUMENT WITH 3-1/4" CDF CAP STAMPED LS7849, 2015.
- FOUND 4"x4" CONCRETE MONUMENT WITH CDF BRASS CAP AS NOTED.
- FOUND T.L. O'CONNOR BRASS CAP IN CONCRETE OR CDF BRASS CAP ON IRON PIPE AS NOTED.
- FOUND REBAR OR T-BAR WITH BATHEY CAP AS NOTED.
- ✱ FOUND MONUMENT AS NOTED HEREON.
- ▲ CONTROL MONUMENT AS NOTED.
- (1) = RECORD DATA PER 1 R/S 48 (T.L. O'CONNOR 1950)
- (2) = RECORD DATA PER 2 R/S 63 (K. NELSON 1965)
- (3) = RECORD DATA PER 7 T.M. 7-8 (T.L. O'CONNOR 1958)
- (4) = RECORD DATA PER 2 R/S 50 (T.L. O'CONNOR 1964)
- (5) = RECORD DATA PER 7 T.M. 16-17 (T.L. O'CONNOR 1959)
- (6) = RECORD DATA PER 7 T.M. 109-110 (T.L. O'CONNOR 1964)
- (7) = RECORD DATA PER 13 R/S 11-16 (J.C. CONKRIGHT 1974)
- (7a) = RECORD DATA PER AN UNRECORDED SURVEY DATED JUNE, 1978 BY JAMES C. CONKRIGHT, LS3137, IN WHICH HE SET LINE MONUMENTS ON THE NORTH LINE OF THE SE1/4 OF THE SE1/4 OF SECTION 3. HIS MAP AND FIELD NOTES ARE ON FILE WITH THIS OFFICE. SEE FILE 88-80 IN THE COUNTY SURVEYOR'S OFFICE.
- (8) = RECORD DATA PER 1163 O.R. 179 (STATE TO MIDDLETOWN UNIFIED SCHOOL DISTRICT 1982)

N.T.S.=NOT TO SCALE
SUB=BURIED



MONUMENT NOTES:

OFFSETS GIVEN ARE PERPENDICULAR TO LINE AND ARE FOR LOCATION ONLY. MONUMENTS ARE ACCEPTED IN PLACE AS MARKING THE BOUNDARY UNLESS OTHERWISE STATED.

- (B) FND. T-BAR W/BATHEY CAP, LS2581, MARKED FOR LOTS 2/3. PER (3). W0.01'
- (C) FND. T-BAR, CAP MISSING, UP 0.35'. PER (3). E0.26'
- (D) FND. T-BAR W/BATHEY CAP, LS2581, MARKED FOR LOTS 4/5. PER (3). W0.02'
- (E) FND. CONCRETE MONUMENT W/2-1/2" BRASS CAP, T.L. O'CONNOR, LS2581. PER (3) IN LIEU OF IRON PIPE PER (1). MON. 13 BEARS S 00°48'28" W 2.67' (S 00°07'53" W 2.66')2.
- (13) FND. 3/4" IRON PIPE W/WOOD PLUG, NO TAG. PER (2). W0.03'
- (F) FND. CONCRETE MONUMENT W/2-1/2" BRASS CAP, T.L. O'CONNOR, LS2581. PER (3)
- (12) FND. 3/4" IRON PIPE W/WOOD PLUG, NAIL & TAG LS2822 PER (2)
- (G) FND 1/2" IRON PIPE WITH BATHEY CAP LS2581 IN LIEU OF CONCRETE MONUMENT AND BRASS CAP PER (2)
- (11) FND. CONCRETE MONUMENT W/2-1/2" BRASS CAP, T.L. O'CONNOR, LS2581. IN LIEU OF 1-1/4" IRON PIPE IN ROCK MOUND PER (4)
- (24) FND. 1" IRON PIPE, UP 0.8', W/2-1/2" BRASS CAP STAMPED T.L. O'CONNOR, LS2581. PER (6).

BOGGS MOUNTAIN DEMONSTRATION STATE FOREST

PORTION OF SECTION 2,
T.11N., R.8W., M.D.M.

207 O.R. 418

LAKE COUNTY PARTNERS, LLC
DOC. #2014003908

S 00°08'53" W
(S 00°09'02" W

1/4
3 2

SEE SHEET 4

SEE SHEET 4

RECORD OF SURVEY

OF
A PORTION OF SECTIONS 2 & 3, TOWNSHIP 11 NORTH,
RANGE 8 WEST, MOUNT DIABLO MERIDIAN, AND SECTION 35,
TOWNSHIP 12 NORTH, RANGE 8 WEST, MOUNT DIABLO MERIDIAN

THE STATE OF CALIFORNIA,
DEPARTMENT OF FORESTRY AND FIRE PROTECTION,

COUNTY OF LAKE, STATE OF CALIFORNIA.

JANUARY 2016 SCALE: 1"=100'

SHEET 5 OF 6

MONUMENT NOTES:

OFFSETS GIVEN ARE PERPENDICULAR TO LINE AND ARE FOR LOCATION ONLY. MONUMENTS ARE ACCEPTED IN PLACE AS MARKING THE BOUNDARY UNLESS OTHERWISE STATED.

- (M) FND. 1-1/4" Ø BRASS CAP, LS2581, SET IN BED ROCK. PER (J)6 IN LIEU OF CONCRETE MONUMENT. E0.07'. MONUMENT N BEARS N 89°45'13" W 12.60'.
- (N) FND. 5/8" REBAR W/BATHEY CAP, LS2581, MARKED FOR CORNER OF LOT 6. PER (J)6. MONUMENT M BEARS S 89°45'13" E 12.60'.
- (O) FND. 1-1/4" Ø BRASS CAP, LS2581 SET IN CONCRETE, SUB 0.5'. PER (J)6. W0.02'
- (P) FND. 1-1/4" Ø BRASS CAP, LS2581 SET IN CONCRETE, MARKED FOR S.E. CORNER OF LOT 3. PER (J)6.
- (Q) FND. 4"x4" CONCRETE MONUMENT, UP 2.0', WITH CDF BRASS CAP STAMPED LS3137, 1973 AND MARKED FOR THE S1/16th CORNER, S3/S2.
- (R) FND. T-BAR, UP 0.8', WITH CDF BATHEY CAP, NO LICENSE NUMBER, SET BY JAMES C. CONKRIGHT PER (J)7a. N0.06'
- (S) FND. T-BAR WITH CDF BATHEY CAP, NO LICENSE NUMBER, SET BY JAMES C. CONKRIGHT PER (J)7a. N0.14'
- (T) FND. T-BAR WITH CAP STAMPED LS3137 PER (J)7.
- (U) FND. 3/4" IRON PIPE, UP 0.5', WITH CDF BRASS CAP STAMPED LS3137, IN ROCK MOUND.
- (V) FND. 3/4" IRON PIPE, FLUSH, WITH CDF BRASS CAP STAMPED LS3137.
- (W) FND. 3/4" IRON PIPE, SUB 0.5', BENT WESTERLY, WITH CDF BRASS CAP STAMPED LS3137. SW0.35' (DISTURBED-NOT ACCEPTED).
- (X) FND. 3/4" IRON PIPE, UP 0.2', WITH CDF BRASS CAP STAMPED LS3137.
- (Y) FND. 3/4" IRON PIPE, FLUSH, WITH CDF BRASS CAP STAMPED LS3137.
- (Z) FND. 1/2" REBAR, SET IN CONCRETE. PER (J)7.
- (A1) FND. T-BAR WITH BATHEY CAP STAMPED LS3137, UP 0.1'.
- (B1) FND. 3/4" IRON PIPE, UP 0.5', WITH CDF BRASS CAP STAMPED LS3137.
- (C1) FND. 3/4" IRON PIPE, UP 0.4', WITH CDF BRASS CAP STAMPED LS3137. E0.08'

FOUND 6"x6" CONCRETE R/W MONUMENT STAMPED "C" ON THE SIDE. FOUND THE TOP BROKEN AND BENT OVER BUT STILL ATTACHED TO THE BASE BY THE CENTRAL COPPER ROD. PUSHED BACK UP BUT NEEDS MORE REHABILITATION. MONUMENT NOT TIED THIS SURVEY.

BASIS OF BEARINGS:

BEARINGS SHOWN HEREON ARE GRID NORTH (CALIFORNIA COORDINATE SYSTEM OF 1983, ZONE 2, EPOCH 2010.00) AND ARE BASED ON STATIC POST-PROCESSED GLOBAL POSITIONING SYSTEM TIES FROM "CONTROL POINT #1" (SEE SHEET 4) TO CONTINUOUSLY OPERATING REFERENCE STATIONS (CORS): CASR (PID D07031), P188 (PID DM6171), AND HOPB (PID AF9699). DISTANCES SHOWN HEREON ARE GROUND. TO OBTAIN GRID DISTANCES MULTIPLY BY THE COMBINED FACTOR = 0.99978610 SEE SHEET 4 FOR CONTROL DIAGRAM.

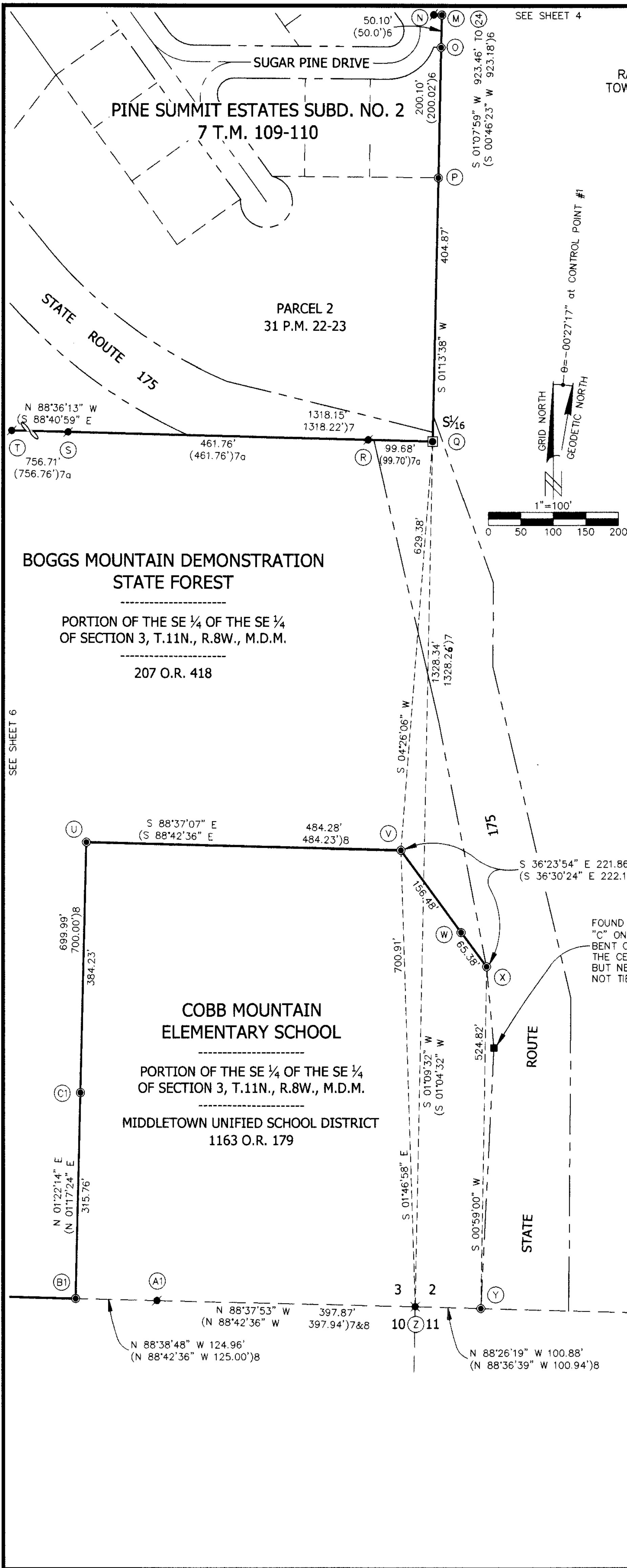
SEE SHEET 1 FOR NOTES

LEGEND:

- BOUNDARY PER THIS SURVEY
- ⊙ SET 2"x27" LONG ALUMINUM MONUMENT WITH 3-1/4" Ø CDF CAP STAMPED LS7849, 2015.
- FOUND 4"x4" CONCRETE MONUMENT WITH CDF BRASS CAP AS NOTED.
- FOUND T.L. O'CONNOR BRASS CAP IN CONCRETE OR CDF BRASS CAP ON IRON PIPE AS NOTED.
- FOUND REBAR OR T-BAR WITH BATHEY CAP AS NOTED.
- ✱ FOUND MONUMENT AS NOTED HEREON.
- △ CONTROL MONUMENT AS NOTED.

- (1) = RECORD DATA PER 1 R/S 48 (T.L. O'CONNOR 1950)
- (2) = RECORD DATA PER 2 R/S 63 (K. NELSON 1965)
- (3) = RECORD DATA PER 7 T.M. 7-8 (T.L. O'CONNOR 1958)
- (4) = RECORD DATA PER 2 R/S 50 (T.L. O'CONNOR 1964)
- (5) = RECORD DATA PER 7 T.M. 16-17 (T.L. O'CONNOR 1959)
- (6) = RECORD DATA PER 7 T.M. 109-110 (T.L. O'CONNOR 1964)
- (7) = RECORD DATA PER 13 R/S 11-16 (J.C. CONKRIGHT 1974)
- (7a) = RECORD DATA PER AN UNRECORDED SURVEY DATED JUNE, 1978 BY JAMES C. CONKRIGHT, LS3137, IN WHICH HE SET LINE MONUMENTS ON THE NORTH LINE OF THE SE 1/4 OF THE SE 1/4 OF SECTION 3. HIS MAP AND FIELD NOTES ARE ON FILE WITH THIS OFFICE. SEE FILE 88-80 IN THE COUNTY SURVEYOR'S OFFICE.
- (8) = RECORD DATA PER 1163 O.R. 179 (STATE to MIDDLETOWN UNIFIED SCHOOL DISTRICT 1982)

N.T.S.=NOT TO SCALE
SUB=BURIED



38

MONUMENT NOTES:

OFFSETS GIVEN ARE PERPENDICULAR TO LINE AND ARE FOR LOCATION ONLY. MONUMENTS ARE ACCEPTED IN PLACE AS MARKING THE BOUNDARY UNLESS OTHERWISE STATED.

- (Q) FND. 4"x4" CONCRETE MONUMENT, UP 2.0', WITH CDF BRASS CAP STAMPED LS3137, 1973 AND MARKED FOR THE S1/16th CORNER, S3/S2.
- (R) FND. T-BAR, UP 0.8', WITH CDF BATHEY CAP, NO LICENSE NUMBER, SET BY JAMES C. CONKRIGHT PER ()7a. NO.06'
- (S) FND. T-BAR WITH CDF BATHEY CAP, NO LICENSE NUMBER, SET BY JAMES C. CONKRIGHT PER ()7a. NO.14'
- (T) FND. T-BAR WITH CAP STAMPED LS3137 PER ()7.
- (U) FND. 3/4" IRON PIPE, UP 0.5', WITH CDF BRASS CAP STAMPED LS3137, IN ROCK MOUND.
- (V) FND. 3/4" IRON PIPE, FLUSH, WITH CDF BRASS CAP STAMPED LS3137.
- (B1) FND. 3/4" IRON PIPE, UP 0.5', WITH CDF BRASS CAP STAMPED LS3137.
- (C1) FND. 3/4" IRON PIPE, UP 0.4', WITH CDF BRASS CAP STAMPED LS3137. E0.08'
- (D1) FND. 4"x4" CONCRETE MONUMENT WITH CDF BRASS CAP STAMPED LS3137, 1973 AS REHABILITATED BY DANNY A. GREGORY, LS8454 PER HIS CORNER RECORD FILED AS DOCUMENT NUMBER: 11-8-39. PER ()7.
- (E1) FND. T-POST WITH TAG STAMPED LS3137. PER ()7.

MONUMENT NOTES (CONT'D):

- (F1) FND. T-BAR, UP 0.5', CAP MISSING, PER ()7.
- (G1) FND. T-BAR, FLUSH, WITH TAG STAMPED LS3137, PER ()7.
- (H1) FND. T-BAR, UP 0.1', WITH BATHEY CAP STAMPED LS3137, PER ()7.
- (I1) FND. T-BAR, FLUSH, WITH TAG STAMPED LS3137, PER ()7.
- (J1) FND. T-BAR, SUB 0.2', WITH TAG STAMPED LS3137, PER ()7.
- (K1) FND. T-BAR, FLUSH, TAG MISSING. PER ()7.
- (L1) FND. 1/2" REBAR, UP 0.4', WITH TAG STAMPED LS3546. NO.02'
- (M1) FND. T-BAR W/BATHEY CAP, LS3137, WIRED TO THE SIDE.
- (N1) FND. T-BAR W/BATHEY CAP, LS3137, BENT N'WLY (DISTURBED, NOT ACCEPTED). NO.19'

RECORD OF SURVEY

OF
A PORTION OF SECTIONS 2 & 3, TOWNSHIP 11 NORTH,
RANGE 8 WEST, MOUNT DIABLO MERIDIAN, AND SECTION 35,
TOWNSHIP 12 NORTH, RANGE 8 WEST, MOUNT DIABLO MERIDIAN

THE STATE OF CALIFORNIA,
DEPARTMENT OF FORESTRY AND FIRE PROTECTION,

COUNTY OF LAKE, STATE OF CALIFORNIA.

JANUARY 2016 SCALE: 1"=100'

SHEET 6 OF 6

See Sheet 1 for Legend,
Basis of Bearings, & Notes

